

**PowerBoss®**  
The Power of Clean



# Admiral 42

Rider Sweeper/Scrubber

## Performance:

- A choice of equipment to meet your requirements: Wet scrubbing and dry vacuuming in one operation and a pre-sweep option is also offered.
- The 82 gallon tank allows for long run times. Optional dirty water recycling system for multiple use of the cleaning solution.
- A strong industrial heavy-duty fork lift truck drive with power reserves for gradients of up to 20%.
- Two separate drive motors for the scrubbing brushes with high degree of stability even when carrying out thorough basic cleaning.
- Working close to the edge and increased working width up to 46" when wet scrubbing as a result of the suspended side scrubbing unit (option).

## Comfort:

- All working functions such as wet scrubbing, supply of water, dry vacuuming, all at the push of a single button.
- The machine is programmed by our engineers according to your specific requirements (for example, brushes and water supply stop when machine comes to a standstill).
- Quiet battery drive, free from exhaust fumes and quick exchange of batteries in approx. 2 minutes.
- An ergonomic workplace with fully sprung driver's seat which can be adjusted to the driver's weight. All operating controls are in direct reach of the operator. Easy steering, simple to operate.
- Optimum view of the area to be cleaned and of the operating panel thanks to the seating position at the center of the machine. Handy: operator can mount the machine from both sides.

## Economy:

- Up to 50% savings of water and cleaning agents as a result of the Aqua-Stop-System. The savings over the lifetime of the machine practically corresponds to the initial purchase price.
- Further savings (by half) of the remaining costs of cleaning chemicals as a result of the chemical metering system (option).
- Short set-up times thanks to the automatic water filling system (7-8 minutes). Tanks are easy to clean.
- Cost savings in the service area as a result of direct access to all important components and an intelligent diagnostic system with display of error codes, etc.

## Perfect vacuum sweeping



Full power thanks to two side brushes with separate drive. Up-take of large debris and fine dirt particles in front of the scrubbing unit. Powerful vacuum blower with dust filter.

## Comfortable operator compartment

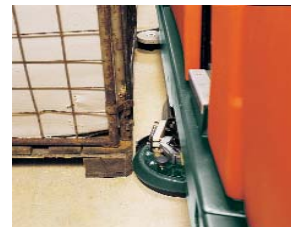


Optimum driver's seat, optimum view. Clear operating panel, visual information regarding all working functions/conditions. All working functions can be started at the press of a button.

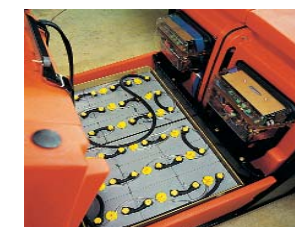
## And there are further highlights:



The dirt hopper can be emptied in a flash without the use of additional tools.



Suspended, floating side scrubbing unit (option) for working close to the edge, near walls, pallets and under shelves.



Environmentally-friendly battery drive. Quick exchange of battery trays in approx. 2 minutes with fork lift truck or lifting equipment.

## Powerful scrubbing brushes



Excellent cleaning performance thanks to two directly driven disc brushes. Can be changed without additional tools. Up to 50% less water and cleaning chemicals used as a result of the Aqua-Stop-System.

## Performance at a glance



Direct access to all important parts and systems thanks to covers which can be opened for service and maintenance purposes. Pictured above for example, chemical metering system and dirty water recycling system.

## Powerful Combination



### Vacuum sweeping

- The sweeping system picks up fine dust and coarse debris in the dry zone in front of the scrubbing unit.

### Wet scrubbing

- The rotating plate brushes easily loosen even the most stubborn dirt.

### Dry vacuuming

- The floating, suspended squeegee, which is parabolically formed, leaves the floor dry enough to walk or drive on.

### Large tank capacity

- The flexible wall between the clean and dirty water tanks ensures long working periods and short set-up times.

### Long running times

- With drive battery 36 V / 640 Ah (PzS) – up to one shift depending upon the application in question.
- For multiple shift work the battery can be exchanged quickly and easily using a fork lift truck or hoists.



**With Pre-sweep:** even larger debris is kept under control "from the word go." Industrial cleaning really can be this quick and safe.



**Without Pre-sweep:** wet scrubbing and dry vacuuming, without a problem, even in narrow passageways/aisles.

<b>Specifications:</b>			
<b>Area performance:</b>			
Maximum coverage	up to 75,347 sq.ft./h ( 7.000 m <sup>2</sup> /h)	<b>Drive:</b>	
<b>Wet cleaning unit:</b>		Drive motor	3.2 hp (2400 W)
Working width brush head	40 in (102 cm)	Working speed up to	4 mph (7,0 km/h)
Brush diameter (2 units)	20 in (53 cm)	Drive speed up to	5 mph (8,0 km/h)
Brush revolutions	210 rpm	Climbing ability, empty/full	20%/15%
Brush motor (2 units)	2 x .9 hp (2 x 700 W)	<b>Dimensions and weights:</b>	
Squeegee (working width)	50 in (126 cm)	Length without/with pre-sweep	85/103 in (215/262 cm)
Solution/Recovery Tanks	82 gal (310 litres)	Width with squeegee/pre-sweep	50/55 in (126/138 cm)
<b>Sweeping system:</b>		Height without/with overhead guard	55/79 in (140/200 cm)
Working width	55 in (138 cm)	Diameter of turning circle	95 in (240 cm)
Sweeping method	Direct throwing	Weight, empty, without drive batteries	1,559 lbs (707 kg)
		Total weight, ready for operation	3,940 lbs (1787 kg)
<b>Accessories and options available:</b>			
Chemical dispensing system, solid wall or flexible wall tank, overhead guard with rear-view mirror, warning beacon, working lights , hand held suction hose, various types of brushes and pads			
Specifications subject to change without notice.			

## PowerBoss is proud to be BLUE! What does it mean to be BLUE?



- **Water Conservation** – Aqua-Stop saves water usage by 50%, water is released through a pump system providing greater control of water usage than gravity systems
- **Clean Air** - High-performance filter system dramatically reduces the release of dust and debris back into the air, dust vacuum ensures that dust is put directly into the hopper, bristle pattern on main broom increases dust control
- **Lower Emissions** – All gas and LP engines meet Tier 2 specifications, catalyst mufflers, battery operated available, diesel operated available, bio-diesel fuel can be used in Kubota engine
- **Safer Work Environment** – Orange machines are highly visible to others in the workplace, simple controls reduce operator error, one-button scrub, horn, fire in hopper indicator, effective braking system, “belly bar” prevents operator from being pinned behind machine when in reverse, parabolic squeegee picks up all water leaving the scrub path virtually dry for traffic, seat equipped with safety shut-off switch, also available: overhead guard, back-up alarm, warning beacon
- **Clean Energy** – Battery operated available, bio-diesel fuel can be used in Kubota engines
- **Lower Chemical Reliance** – Aqua-Stop saves chemical usage by 50%, pump system for water and chemical release allows for better control of chemical usage, chemical metering system is available as an option and regulates chemical usage to the correct dose

*Features listed are general for PowerBoss equipment; each machine has different features and therefore, may or may not fill all of the features listed above.*

Minuteman PowerBoss, Inc.  
175 Anderson Street Aberdeen, NC 28315  
Phone: 910-944-2105 Fax: 910-944-7409

Come Visit our Website at  
[www.powerboss.com](http://www.powerboss.com)